

CLIMATE CHANGE = MORE DIARRHEAL DISEASE

BIG PICTURE



CO₂ EMISSIONS

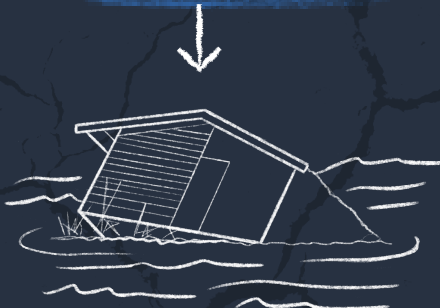


INCREASED GLOBAL TEMPERATURES + RAINFALL VARIABILITY



FLOODING, DROUGHTS, FAMINE

FLOODING



CONTAMINATION OF WATER SOURCES + OVERWHELMED WATER AND SANITATION SYSTEMS



INCREASED DIARRHEAL DISEASE

DROUGHTS



WATER SCARCITY

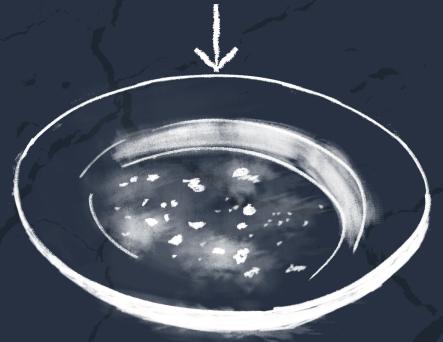


CONTAMINATED WATER SOURCES + LOWER ACCESS HANDWASHING



INCREASED DIARRHEAL DISEASE

FAMINE



MALNUTRITION



INCREASED VULNERABILITY TO INFECTIOUS DISEASES

DEFEATDD